

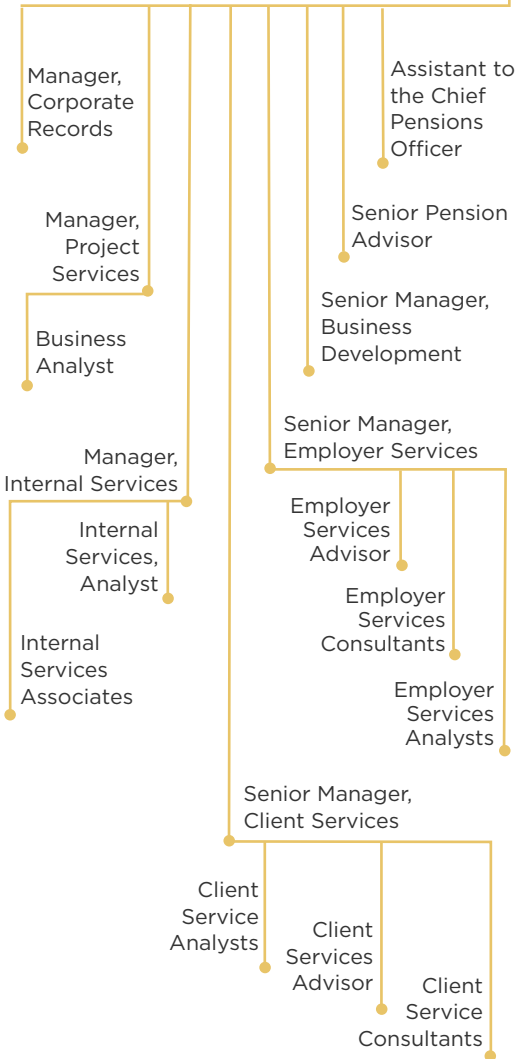
# Our NS Pension Team *as at January 2026*

Our dedicated team of over 80 staff members is here to manage our plans' investments and provide high-quality pension administration services to all our plan members. We work closely with the Board to achieve our key strategic objectives and ensure we meet the service and investment targets set by our plan Trustees. We are committed to operating within the approved policies and budgets to serve our plan members fairly.

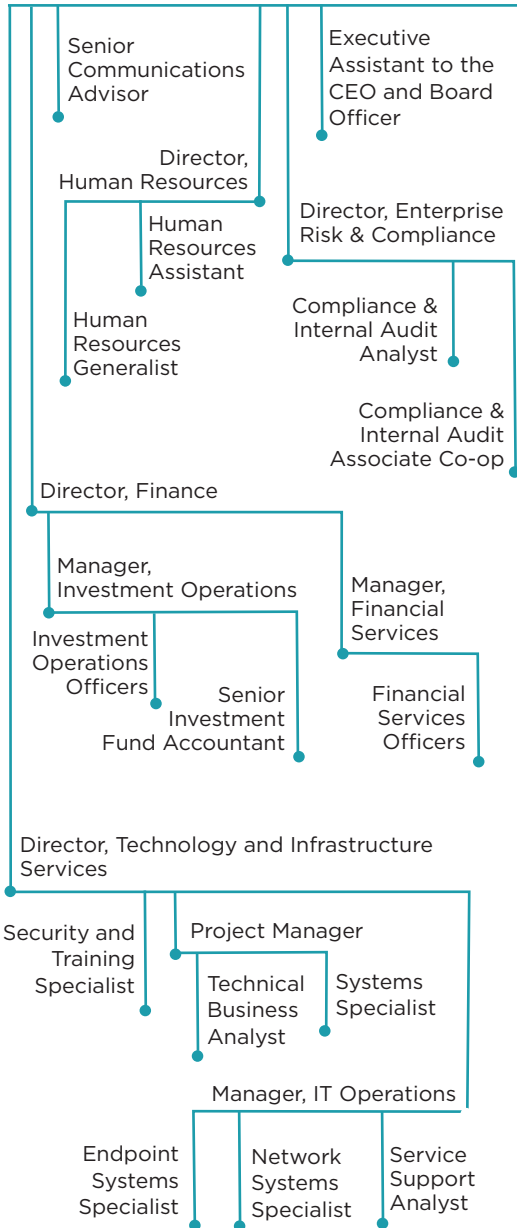
Our team is structured according to the following functions: Pension Services, Corporate Services, and Investment Services.



**Cathy Clarke**  
Chief Pensions Officer



**Douglas Moodie**  
Chief Executive Officer



**Steve Mahoney, CFA, FSA, CAIA, PRM**  
Chief Investment Officer

